



VP7212MDP

Powered 12" 2-Way Integrated Stage Monitor Loudspeaker System

Key Features:

- ▶ Powered bi-amplified full-range loudspeaker with JBL DrivePack® technology for stage monitor use.
- ▶ High-impact system with premium fidelity
- ▶ Field rotatable baffle for easy left/right configurations
- ▶ 1750 watts peak output power, 875 watts continuous
- ▶ 12-inch Differential Drive® low-frequency driver for extended low-frequency output
- ▶ 50° x 90° coverage optimized for use as stage monitor
- ▶ Robust powder-coated die cast aluminum handles, designed for strength and comfort



Applications:

- ▶ High-impact stage monitoring applications
- ▶ Theatrical stage sound design
- ▶ House of Worship stage monitor
- ▶ Live performance venue stage monitor
- ▶ Performing arts center stage monitor
- ▶ Sound reinforcement rental companies

The VP7212MDP is a powered 12" 2-way integrated loudspeaker system designed specifically as a high-impact stage monitor.

The VP7212MDP features 1750 watts of peak output power, and integrated onboard digital signal processing.

Designed in cooperation with Crown International, the ultra-compact, high-power JBL DrivePack DPC-2 amplifier module features Crown's Class D digital power amplification circuitry.

DBT (Dual-Bridged Technology™) directly links discrete amplifier channel outputs to each voice-coil in the Differential Drive loudspeaker. Electrical power transfer to the transducer is optimized for maximum system performance.

VP7212MDP transducers are JBL's 2262FF 12" diameter Differential Drive woofer and the JBL 2452H-SL compression driver. The high frequency driver is coupled to a JBL PT-F95HF Progressive Transition™ (PT) Waveguide for excellent 50° x 90° pattern control, smooth frequency response, and low distortion.

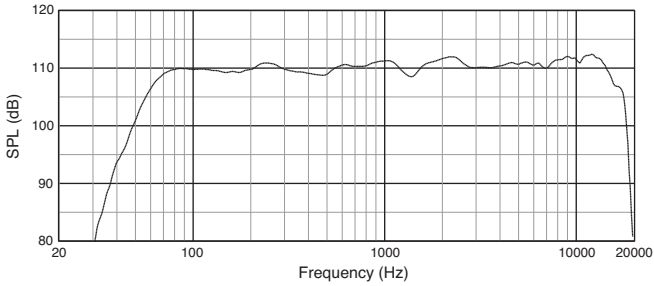
Specifications:

Frequency Response (+/-3 dB):	80 Hz - 18 kHz
Frequency Range (-10 dB):	55 Hz - 20 kHz
Coverage Pattern:	50° x 90°
Directivity Factor (Q):	12.6
Directivity Index (DI):	11 dB
Maximum Peak Output ¹ :	134 dB SPL 1m
Transducer Section:	
Low Frequency Section:	JBL 2262FF, 304 mm (12 in) dia., 76 mm (3 in) Dual Coil neodymium Differential Drive®, Direct Cooled
Bandpass Nominal Impedance:	2 x 2 ohms
High Frequency:	JBL2452H-SL, 100 mm (4 in) titanium damped diaphragm, 1.5 in. exit.
Bandpass Nominal Impedance:	8 ohms
System:	
DPC-2 Internal Amplification Output (at nominal load)	1750 Watts Peak, 875 Watts Continuous
DPC-2 Output (Continuous IEC shaped pink noise into rated load impedance):	750LF/125HF Watts
DPC-2 Output Section:	LF: Dual Bridged Technology™, Class D HF: Bridged Class D
Audio Input connector	XLR with loop-through
User Controls:	System EQ Selection: Full Range or Speech/Vocal 0-16 dB input Attenuator with 32 precision 0.5 dB steps
Signal Processing:	DSP based, resident in Input Module.
System Management:	DSP based limiters for mechanical and thermal protection
AC Power Operating Range:	90-132 VAC/216-264 VAC, 50/60 Hz
AC Line Voltage:	50/60 Hz; User Selectable; 120V/240V (-15%, +10%)
AC Input Connector:	Neutrik PowerCon (NAC 3MPA)
AC Loop-thru:	Neutrik PowerCon (NAC 3MPB)
AC Current Requirement:	6A per system at 120V, 3A per system at 240V
Enclosure:	
Box Construction:	5/8 in. multi-ply exterior grade Baltic birch. Internally braced. Black DuraFlex™ finish.
Grille:	14 Gauge Black powder-coated perforated steel with foam backing.
Dimensions (H x W x D):	346 x 565 x 413 mm 13.6 x 22.3 x 16.2 in
Net Weight:	20.7 kg (45.5 lbs)

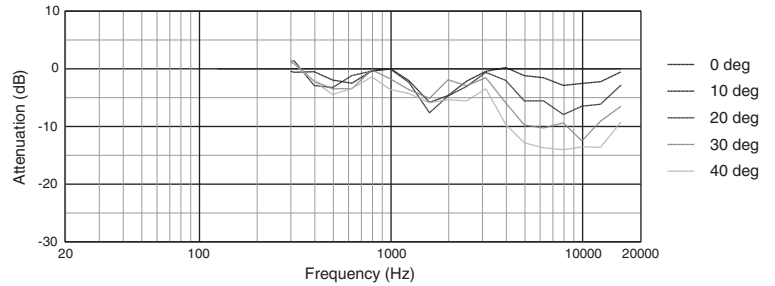
¹Measured with IEC shaped noise in free field conditions.

▶ VP7212MDP Powered 12" 2-Way Integrated Stage Monitor Loudspeaker System

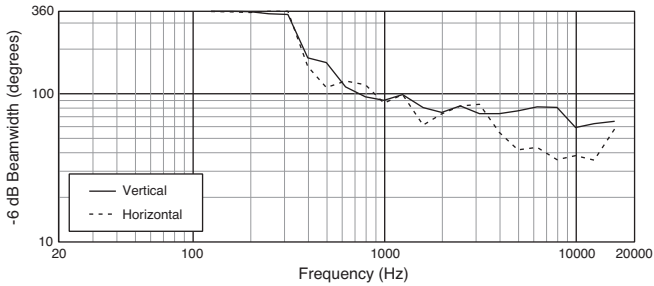
Frequency Response



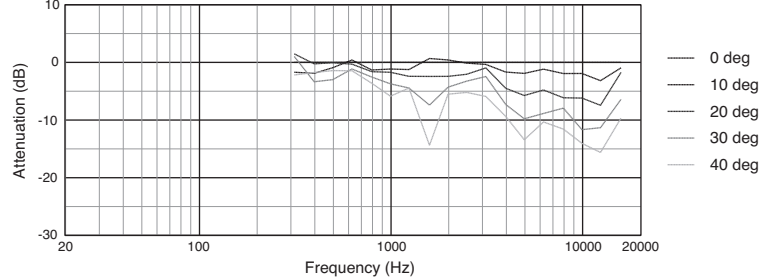
Right Off-Axis Frequency Response



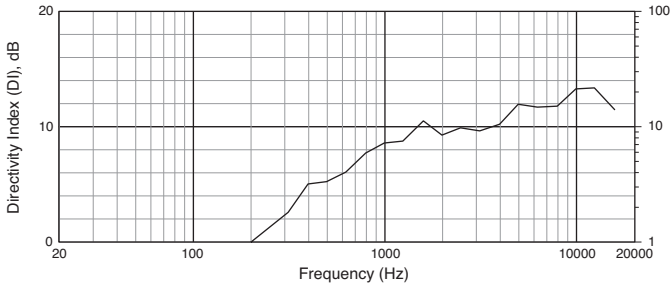
Beamwidth



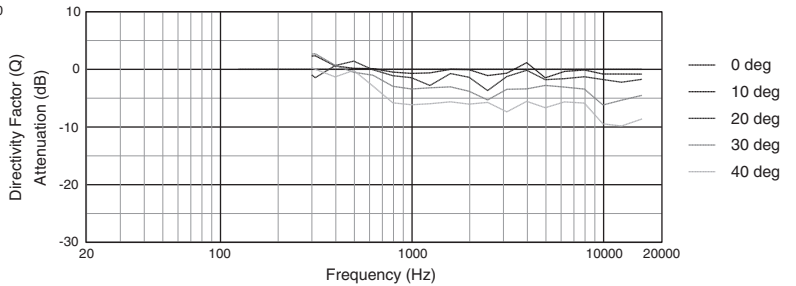
Left Off-Axis Frequency Response



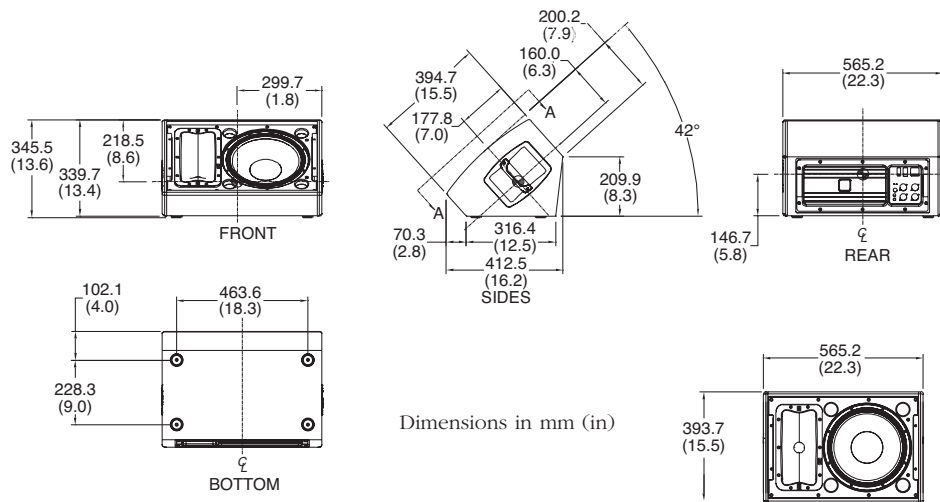
Directivity Index, Q



Vertical Off-Axis Frequency Response



Dimensions



Accessories:

JBL offers a wide variety of accessories including rigging accessories and transport covers. Please visit www.jblpro.com for a complete list of VP Series accessories.



VP SERIES
venue performance



JBL Professional
8500 Balboa Boulevard, P.O. Box 2200
Northridge, California 91329 U.S.A.

© A Harman International Company
© Copyright 2007 JBL Professional

SS VP7212MDP
CRP 5M
05/07