



EtherSound™ interfaces

AQONDA

Network Audio has evolved. AQONDA EtherSound™ audio bridges by Digigram open new dimensions for your network audio needs.

AQONDA 8 and AQONDA 16 are remotely-controllable EtherSound audio bridges, capable of converting up to sixteen analog signals into as many EtherSound channels, and likewise capable of extracting up to sixteen EtherSound™ channels to sixteen analog outputs. A perfect workhorse for applications such as outside broadcasting or live sound events, this with audio quality you can expect from Digigram.

Building on the success of Digigram's original EtherSound audio bridges, AQONDA brings the concept to the next level in a single 2U rackmount unit. AQONDA units are the first devices to implement ES-Giga technology with its 2x256 channel count plus additional network and control capabilities.

Time- and money-saving features include support for ES-Giga TCP/IP data tunneling, allowing for remote control of various components such as amp control devices, DMX lighting controllers, processors, etc.

The equipment is available in two flavors: AQONDA 8 which is 8-in/8-out, and AQONDA 16 which is the 16-in/16-out version.

Uncompromised quality in a small package

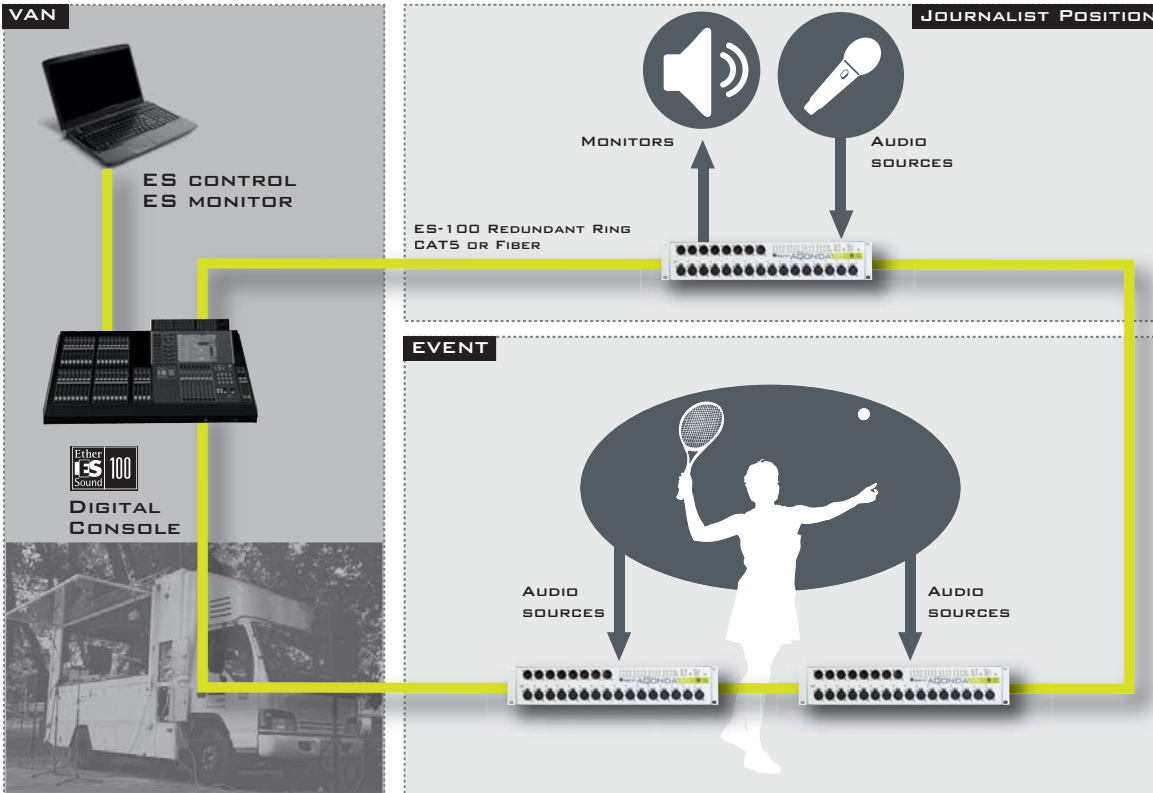
Built by digital and network audio specialists Digigram, these interfaces make no compromise on audio quality: The inputs cover a linear gain range from microphone to line level and benefit from extremely high end preamps to ensure uncompromised audio quality. Furthermore, these preamps can be remotely controlled from popular digital consoles with EtherSound™ connectivity (such as Yamaha or Innovason consoles).

Both AQONDA units offer made-to-last analog/network Neutrik™ connectivity. Add to this a flawless build quality, a compact 2U 19-inch rack form factor, plus well thought out ergonomics and you obtain a perfect network audio "mission-critical" companion.

Compatibility with existing EtherSound™ setups

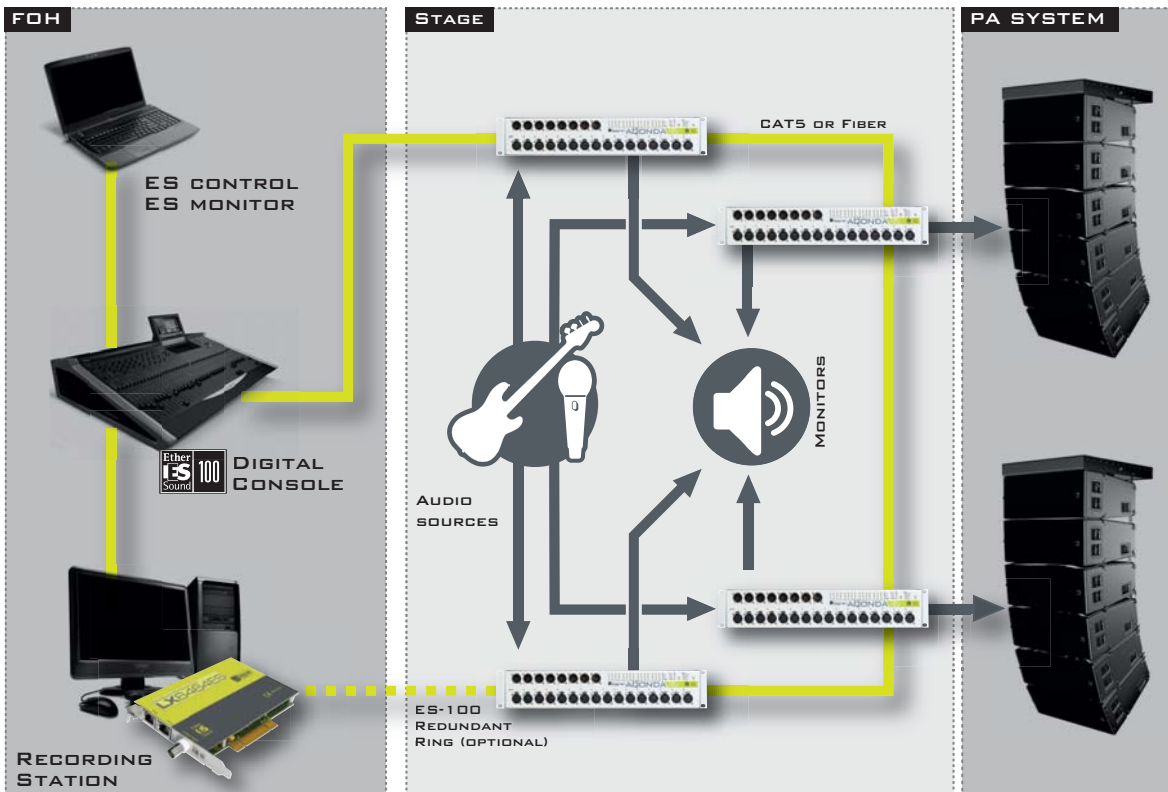
While ES-Giga compatibility makes this EtherSound™ audio bridge future-proof, it is also perfectly compatible with existing ES-100 setups. A simple switch on the back panel will turn this ES-Giga workhorse into a regular ES-100 interface with no compatibility restrictions.

AQONDA



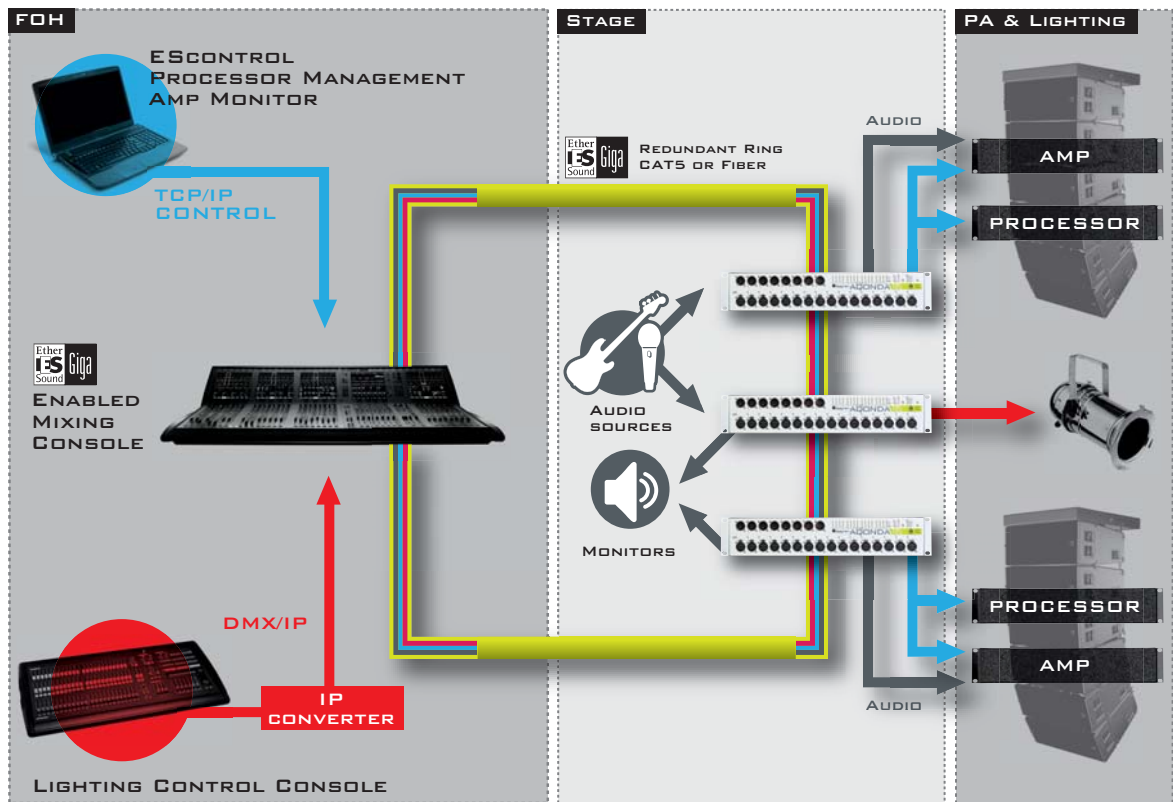
Outside Broadcasting

AQONDA audio bridges offer an affordable “digital snake” solution with no compromise on audio quality. Redundant ring capability will bring you peace of mind by guaranteeing 100% on-air time.



Live Events

Build a large scale audio bus between the stage and front-of-house, providing audio quality from Digigram and remotely controllable preamps from popular digital consoles with EtherSound connectivity such as Yamaha or Innovason consoles.



Versatile Digital Snake

Through the very same ES-Giga network link, transport up to 512 audio signals plus the control and monitoring data for the entire system.

Don't be afraid of sharing your network with the lighting guys. The system is designed to give audio the top priority, whatever happens with the other encapsulated data.



AQONDA16

AQONDA8

Rack		
Size	2U 19" Rack : 88x482.6x325 mm	
Power Supply	100V - 250V 50 - 60Hz	
Operating: temp / humidity (non-condensing)	0°C / +50°C • 5% / 90%	
Storage: temp / humidity (non-condensing)	-5°C / +70°C • 0% / 95%	
Input		
Number of analog inputs (mono)	16 mono balanced/unbalanced line / mic inputs	8 mono balanced/unbalanced line / mic inputs
Phantom Power	48Vdc on each input	
Analog programmable input level	-22 to 71dB in 1dB step	
Max Input Level	+22dBu	
Max input Level with +71dB Gain at 0dBFS	-71dBu	
Impedance (software selectable)	600 Ohm / > 3 kOhm	
Connectors	16 Inputs on XLR Female on front panel	8 Inputs on XLR male on front panel
Audio input line specs (Measurements at 48KHz with filter on the 22Hz-22KHz range)		
Frequency response (record + play) at 48 kHz:	20 Hz - 20 kHz: +0 /-0.5 dB	
Dynamic range (A-weighted)	> 112 dB	
THD + noise 1 kHz at -2 dBfs	< -100 dB	
Crosstalk	1 Khz at +22dBu : < -115dB 15 Khz at +22dBu : < -105dB	
Audio input microphone specs (Measurements at 48KHz with filter on the 22Hz-22KHz range)		
Equivalent Input Noise G=60 dB Z=150 Ohms	< -126 dBu	
Output		
Number of analog outputs (mono)	16 Servo-balanced	8 Servo-balanced
Analog programmable output level	-118dB to 0dB in 0,5dB step	
Max Input Level / Impedance	+22dBu / < 100 Ohm	
Connectors	8 outputs on XLR Female on front panel 8 outputs on DB25 Female on rear panel"	8 Outputs on XLR male on front panel
Audio output specs (Measurements at 48KHz with filter on the 22Hz-22KHz range)		
Frequency response (record + play) at 48 kHz:	20 Hz - 20 kHz: +0 /-0.4 dB	
Dynamic range (A-weighted)	> 112 dB	
THD + noise 1 kHz at -2 dBfs	< -98 dB	
Crosstalk	1 Khz at +22dBu : < -115dB 15 Khz at +22dBu : < -105dB	
Auxiliary / Connectivity		
Word Clock	1 input and 1 output on two BNC connector	
RS232 / RS422	1 RX / 1 TX on DB9 Male	
General Purpose Input	8 Ground Sensing inputs on 2x 8 pts Terminal Block	
General Purpose Output	8 relay outputs on 2 x 8pts Terminal Block	
General		
Programmable sampling frequency	48, 44K1	
A/D and D/A converter resolution	24 bits	

Digigram SA

(Serving Europe, Africa, Middle East)

INOVALLEE - 82/84 Allée Galilée
38330 Montbonnot - FRANCE
Tel: +33 (0)4 76 52 55 01
Fax: +33 (0)4 76 52 53 07
E-mail: sales@digigram.com

Digigram Inc.

(Serving North America, Latin America)

2000 North 14th Street, Suite 530,
Arlington, VA 22201-USA
Tel: +1 703 875 9100
Fax: +1 703 875 9161
E-mail: input@digigram.com

Digigram Asia Pte Ltd.

(Serving Asia and Australia/Oceania)

350 Orchard Road
#19-07 Shaw House Singapore
238868-SINGAPORE
Tel: +65 6291 2234 - Fax: +65 6291 3433
E-mail: info_asia@digigram.com